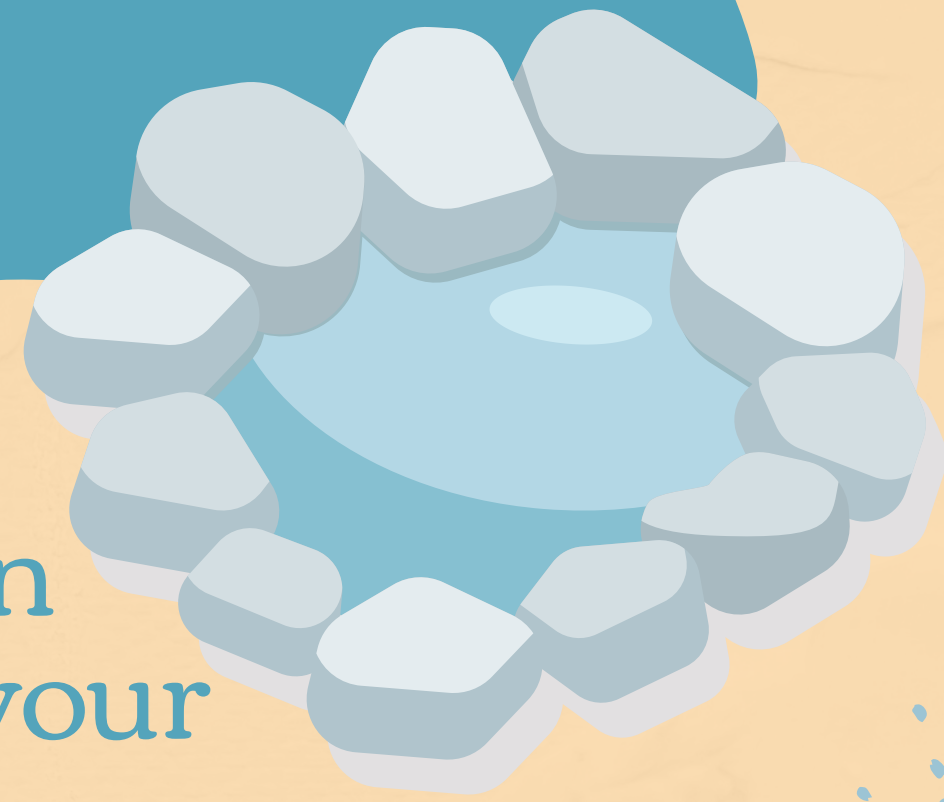


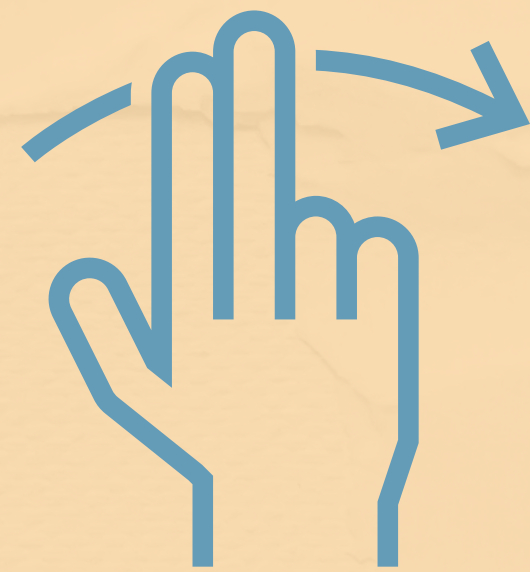
# What slides on ice?



**1** Find a patch of ice in your yard or make your own ice on a cookie sheet in the freezer

**2** Gather test materials from the list below. Or try some of your own!

**3** Try sliding your materials across your patch of ice and make observations



Rocks

Buttons

Socks

Bark

Feathers

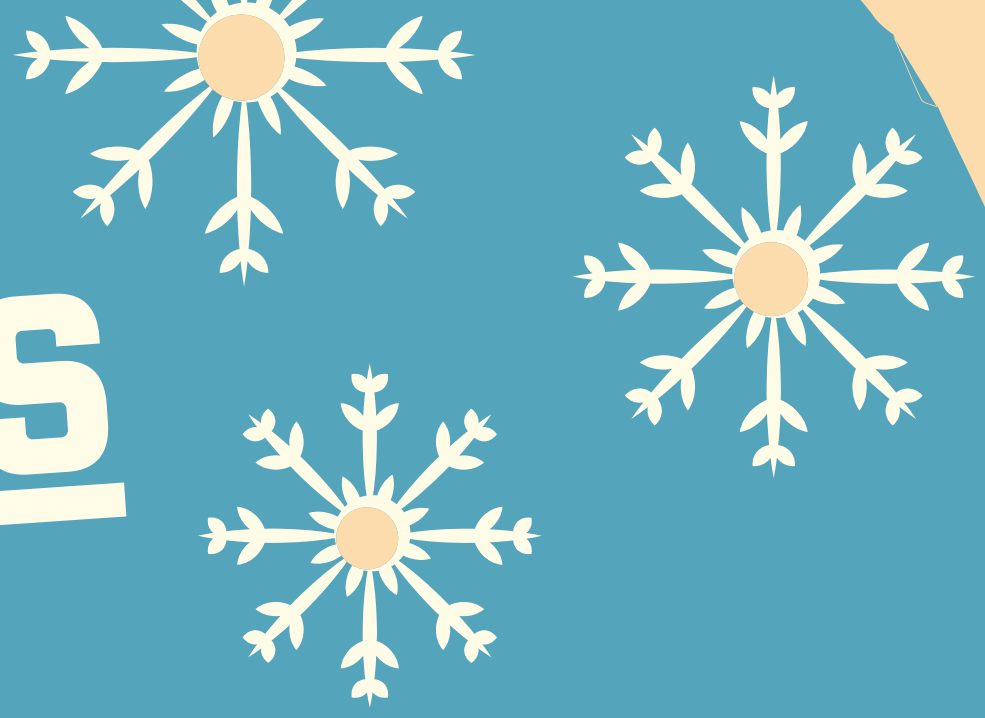
Cotton  
ball

Paper

Eraser

Bar of  
soap

# Observations



Object:

---

---

---

---

---

---

---

---

**What do they**

- look like?
- feel like?

**How much do they?**

- weigh?

**Do you think  
they will slide?**

Object:

---

---

---

---

---

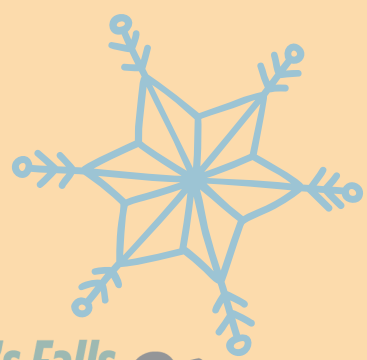
---

---

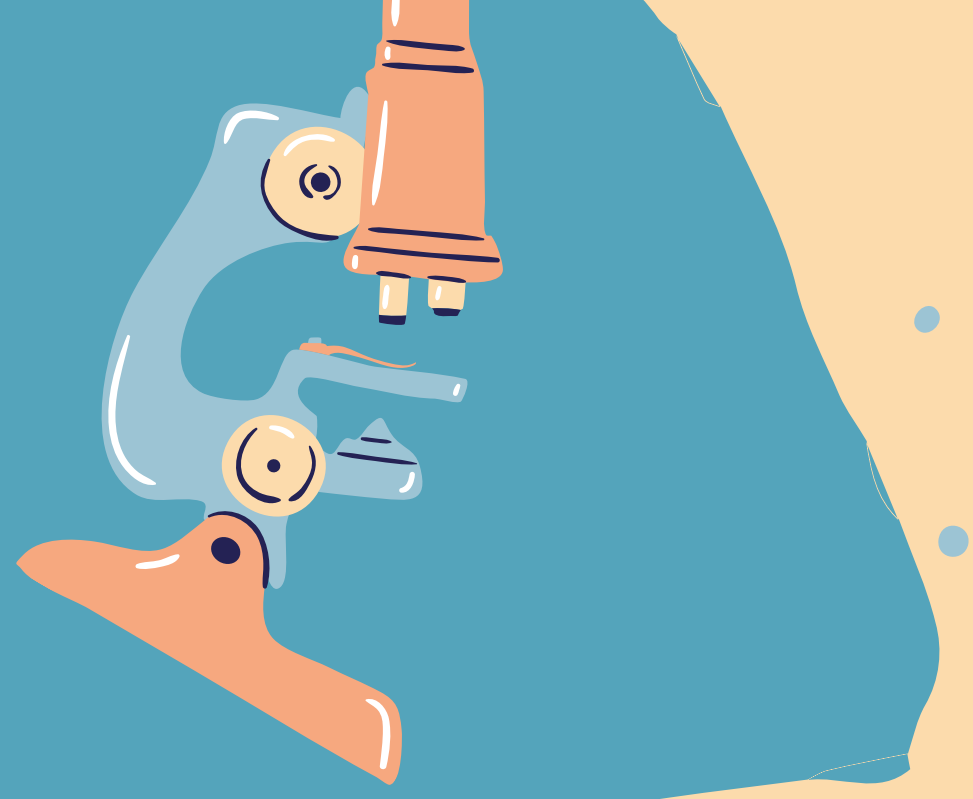
---

---

---



# The Science



## What slid the best?

- What did they look like?
- What did they feel like?

Objects that are  
smooth slide better

Smooth objects have less friction acting on them that allow them to slide across ice

Objects that are rough have  
more resistance

There is more friction acting on rough objects so they have a hard time sliding